



Company : Beach Petroleum Ltd

Well : Fermat-1

Interval : 58.00 - 1130.95 meters

Created : 21/Dec/2008 5:41:42 AM



INTEQ

FORMATION EVALUATION LOG

DRILLING PARAM		MD meters	Oil Show P F G	LITHOLOGY %	CORE	TOTAL GAS	CHROMATOGRAPH	Calcmetry	Lithology Description
ROP (m/hr)	WEIGHT ON BIT (klbf)								
200	160	120	80	40					
	10	20	30	40	50				

		60							
		70							
		80							
		90							
		100							
		110							
		120							
		130							
		140							
		150							

RR1: 660 mm(26") X
 914mm(36") H/Opener
 Make: Reed
 Type: Tricone
 Jets: 3 x 22, 1x16
 Depth In: 76.7 m
 Depth Out: 119.0 m
 Drilled 42.3m in 3.2 hrs
 Grade: 1-1-NO-A-E-I-NO TD

WOB: 4-6 Kftlbs
 RPM: 19-100
 GPM: 335-1000
 SPP: 100-900 psi

Set 30" Casing at 116.0 m

14/12/2008

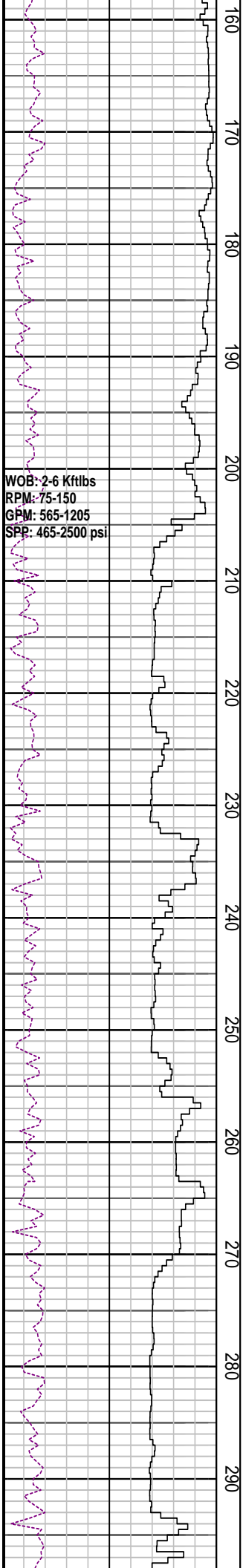
NB2: 444 mm(17-1/5")
 Make: Hughes/MXL-TOO
 Type: Milltooth
 Jets: 3 x 20
 Depth In: 119.0 m
 Depth Out: 999.0 m
 Drilled 880m in 21.3 hrs
 Grade: 2-2-LT-G-E-I-LN-TD

Spud Fermat-1 @ 00:00 hrs on 14-Dec-2008

RT-MSL: 38.0 mMDRT
 Water Depth: 38.7 mMDRT
 RT-Sea Bed 76.7 mMDRT

914mm (36") Section TD @ 119.0m

Drill with Sea water & Hi-Vis sweeps,
 Returns to seabed



WOB: 2-6 Kftlbs
RPM: 75-150
GPM: 565-1205
SPR: 465-2500 psi

MD: 167.75m Inc: 1.24°
TVD: 167.74m Azi: 1.78°

MD: 197.16m Inc: 0.28°
TVD: 197.14m Azi: 58.77°

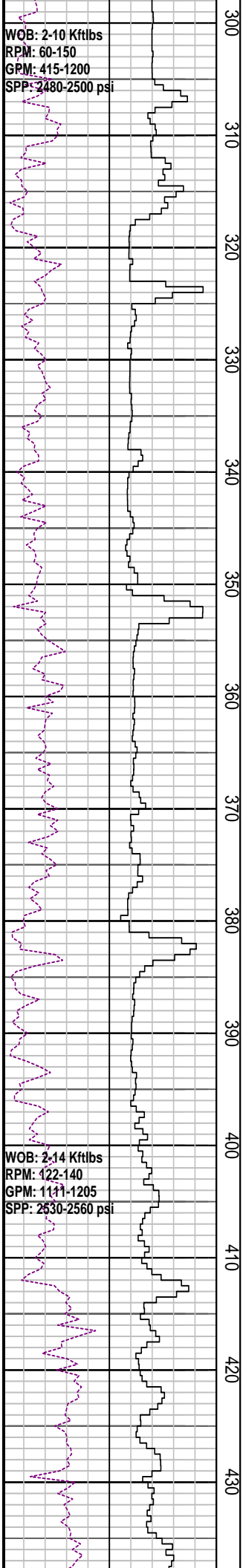
Drill with Sea water & Hi-Vis sweeps,
Returns to seabed

MD: 256.53m Inc: 0.60°
TVD: 256.51m Azi: 153.58°

MD: 286.11m Inc: 2.77°
TVD: 286.08m Azi: 188.85°

WOB: 2-10 Kftlbs
RPM: 60-150
GPM: 415-1200
SPP: 2480-2500 psi

WOB: 2-14 Kftlbs
RPM: 122-140
GPM: 1111-1205
SPP: 2530-2560 psi



300
310
320
330
340
350
360
370
380
390
400
410
420
430

Drill with Sea water & Hi-Vis sweeps,
Returns to seabed

MD: 315.55m	Inc: 1.66°
TVD: 315.5m	Azi: 227.88°

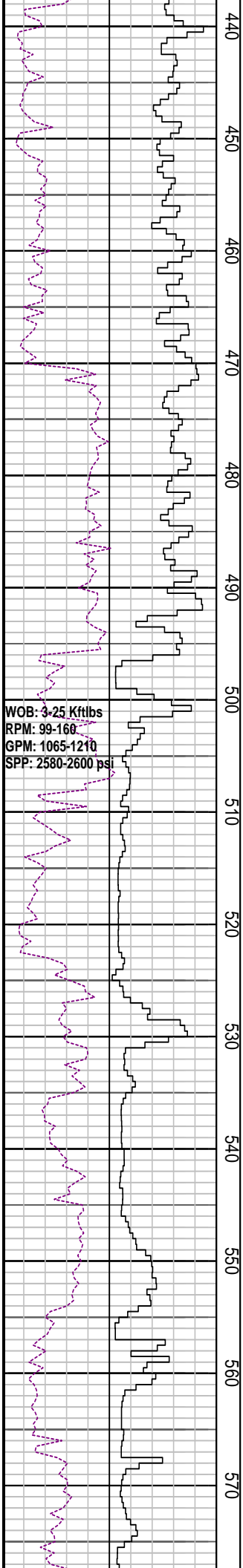
MD: 345.27m	Inc: 0.27°
TVD: 345.21m	Azi: 15.5°

Drill with Sea water & Hi-Vis sweeps,
Returns to seabed

MD: 374.62m	Inc: 0.25°
TVD: 374.56m	Azi: 25.51°

MD: 404.16m	Inc: 1.88°
TVD: 404.10m	Azi: 211.9°

Drill with Sea water & Hi-Vis sweeps,
Returns to seabed



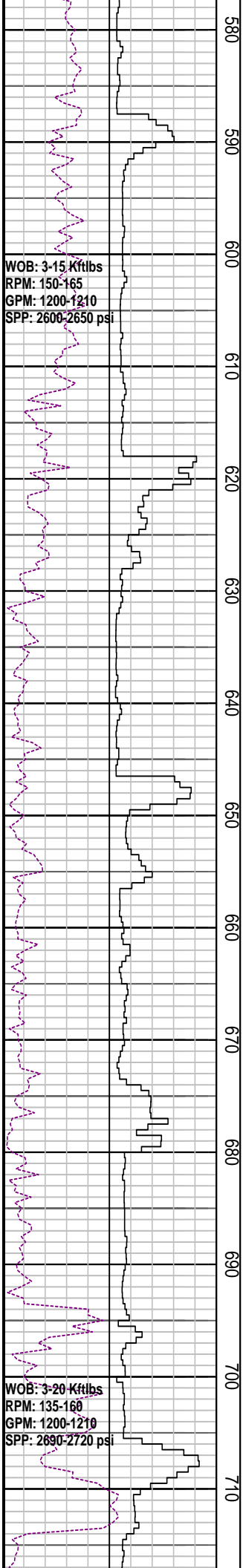
440
450
460
470
480
490
500
510
520
530
540
550
560
570

MD: 463.95m Inc: 0.32°
TVD: 463.88m Azi: 269.03°

MD: 493.39m Inc: 0.43°
TVD: 493.32m Azi: 249.6°

MD: 523.07m Inc: 0.44°
TVD: 523.00m Azi: 347.74°

MD: 552.74m Inc: 0.22°
TVD: 552.67m Azi: 270.06°



WOB: 3-15 Kftlbs
 RPM: 150-165
 GPM: 1200-1210
 SPP: 2600-2650 psi

WOB: 3-20 Kftlbs
 RPM: 135-160
 GPM: 1200-1210
 SPP: 2690-2720 psi

MD: 582.42m Inc: 0.09°
 TVD: 582.35m Azi: 29.68°

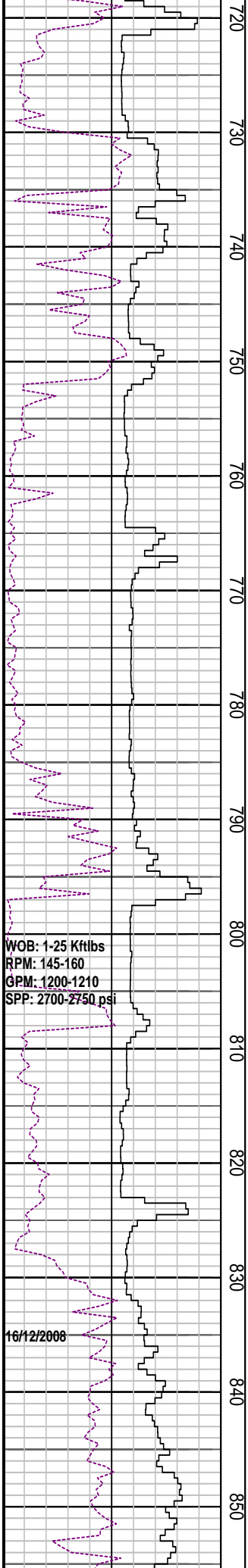
Drill with Sea water & Hi-Vis sweeps,
 Returns to seabed

MD: 611.99m Inc: 0.51°
 TVD: 611.92m Azi: 339.54°

MD: 641.4m Inc: 0.19°
 TVD: 641.32m Azi: 327.69°

MD: 670.88m Inc: 0.49°
 TVD: 670.80m Azi: 288.55°

MD: 700.49m Inc: 0.33°
 TVD: 700.41m Azi: 247.33°



WOB: 1-25 Kftlbs
 RPM: 145-160
 GPM: 1200-1210
 SPP: 2700-2750 psi

16/12/2008

MD: 729.55m	Inc: 0.46°
TVD: 729.47m	Azi: 275.90°

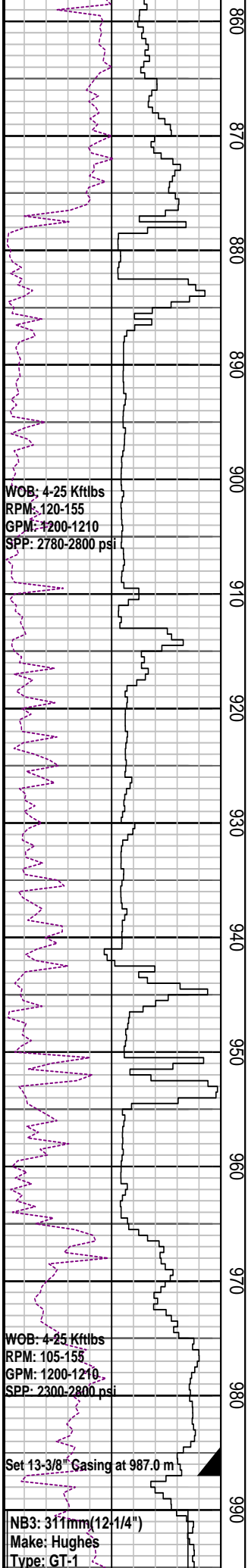
Drill with Sea water & Hi-Vis sweeps,
 Returns to seabed

MD: 759.18m	Inc: 0.36°
TVD: 759.10m	Azi: 241.87°

MD: 788.76m	Inc: 0.65°
TVD: 788.68m	Azi: 163.00°

MD: 818.32m	Inc: 0.12°
TVD: 818.24m	Azi: 122.27°

MD: 848.13m	Inc: 0.24°
TVD: 848.05m	Azi: 67.63°



MD: 877.69m	Inc: 0.5°
TVD: 877.61m	Azi: 112.18°

Drill with Sea water & Hi-Vis sweeps,
Returns to seabed

MD: 906.92m	Inc: 0.33°
TVD: 906.84m	Azi: 214.11°

MD: 936.44m	Inc: 1.52°
TVD: 936.35m	Azi: 212.28°

MD: 966.55m	Inc: 2.74°
TVD: 966.44m	Azi: 216.55°

Drill with KCL-Polymer Mud from 999.0m	
---	--

MD: 990.90m	Inc: 2.28°
TVD: 990.8m	Azi: 226.38°

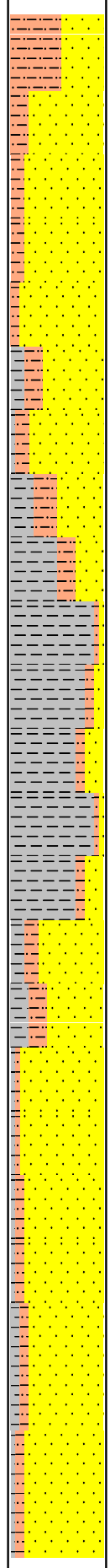
Depth In: 999.0 m
 Depth Out: 1027.0 m
 Drilled 28.0m in 1.1 hrs
 Grade: x-x-xx-x-x-x-xx_xx

19/12/2008

20/12/2008

WOB: 1-8 Kftlbs
 RPM: 20-177
 GPM: 290-1006
 SPP: 915-2045 psi

1000
1010
1020
1030
1040
1050
1060
1070
1080
1090
1100
1110
1120
1130



FIT @ 987.0 m with 9.5 ppg
 EMW: 15.0 ppg@960 psi

SILTSTONE: m dk gy-dk gy, n-v sli calc, tr pyr, tr musc, arg I.P. grd to Clst I.P. sft-f, dom sbiky, tr blkly

SANDSTONE: qtz, cl-trnsl, fros, smky gy I.P. v f-f, sbang, wl srt, wk calc cmt, loc com arg mtrx, tr pyr, tr musc, v p por, n fluor

MW: 9.5 ppg FV: 177
 PV: 17 Gel: 10/13/15
 YP: 25 pH: 10.5

MD: 1023.76m Inc: 2.63°
 TVD: 1023.6m Azi: 224.84°

SILTSTONE: ol gy-m dk gy, sli calc, r nod pyr, sft, plas I.P. sbiky, grd to Clst

CLAYSTONE: m gy-lt yel gy, sli calc, sli slit, sli micr mic I.P. occ wh calc infill, sm, plas, mas-amor

MD: 1053.62m Inc: 2.63°
 TVD: 1053.4m Azi: 224.67°

SANDSTONE: qtz, cl-trnsl, fros, smky dk gy I.P. v f-f, sbang-sbrnrd, wl srt, loc com arg mtrx, tr lit frag, tr fspr, tr musc, v p por, n fluor

MD: 1083.09m Inc: 2.60°
 TVD: 1082.9m Azi: 225.86°

SANDSTONE: qtz, cl-trnsl, fros, smky dk gy I.P. v f-f, ang-sbrnrd, wl srt, loc com arg mtrx, mnr fri agg, n vis cmt, tr lit frag, tr fspr, tr musc, v p por, n fluor

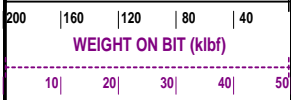
MD: 1112.27m Inc: 2.75°
 TVD: 1112.0m Azi: 224.69°

FORMATION EVALUATION LOG

DRILLING PARAM	TOTAL GAS	CHROMATOGRAPH	Lithology Description
----------------	-----------	---------------	-----------------------

DRILLING PARAM

ROP (m/hr)



MD meters 1:500

INTERPRETED LITHOLOGY

Oil Show
P F G

LITHOLOGY %

CORE

TOTAL GAC

CHROMATOGRAPH

Calimetry

Lithology Description